



Customer: Honey B's
Address: 6841 Virginia Parkway Suite 103, #218
McKinney, TX 75071
Sample ID: Comfort Cream
Matrix: Topical
Labnumber: 23J0064-01

Cannabinoid Profile

Test Conditions: 21°C

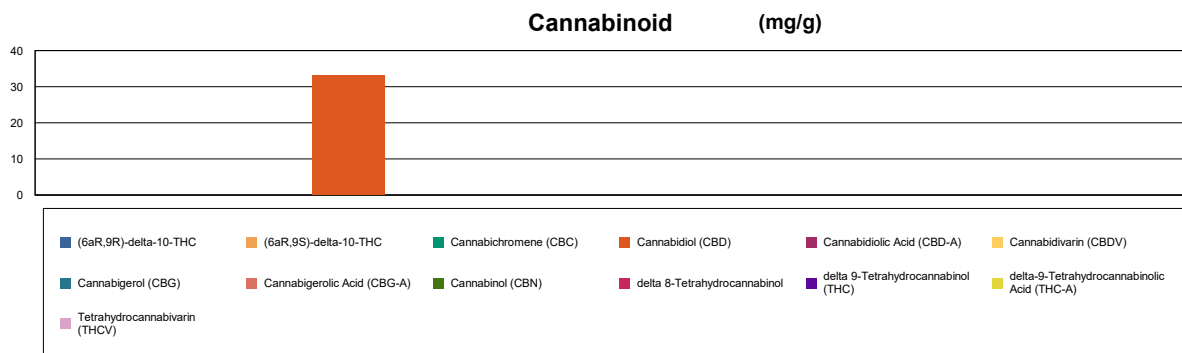
Extraction Technician: SH

Analytical Chemist: SH

Extraction Date(s)	Analysis Date(s)
10/9/2023	10/10/2023

Test Method: Cannabinoid Potency by HPLC		Results	
	LOD (mg/g)	%	mg/g
Cannabidivarin (CBDV)	<0.070		
Cannabidiolic Acid (CBD-A)	<0.070		
Cannabigerolic Acid (CBG-A)	<0.070		
Cannabigerol (CBG)	<0.070		
Cannabidiol (CBD)		3.30	33.0
Tetrahydrocannabivarin (THCV)	<0.070		
Cannabinol (CBN)	<0.070		
Cannabichromene (CBC)	<0.070		
delta 9-Tetrahydrocannabinol (THC)	<0.10		
delta-9-Tetrahydrocannabinolic Acid (THC-A)	<0.10		
delta 8-Tetrahydrocannabinol	<0.10		
(6aR,9S)-delta-10-THC	<0.10		
(6aR,9R)-delta-10-THC	<0.10		
Cannabinoids Total		%	mg/g
Max Active THC (delta-9-tetrahydrocannabinol)		<0.01	<0.10
Max Active CBD		3.30	33.00
Total Cannabinoids		3.30	33.00

Following USDA guidelines on uncertainty, Altitude Consulting's uncertainty is calculated to be +/- 5% for all cannabinoids using a coverage factor of 2 (95% confidence interval). Measurement uncertainty has not been factored into reported values. Blank results indicate the compound was below the limit of detection.



Gary Brook - Laboratory Director - 10/11/2023

Reporting Limits will vary based on sample extraction weight used for the analysis.

The results of this report are based solely on the sample submitted and cannot be reproduced. Decision Rule: Measurement uncertainty is not accounted for in the reported values.

Results are based solely on calculated numbers. Altitude Consulting makes no Statements of conformity. **Pesticide, metal, and microbial analyses are subcontracted to ISO**

17025 laboratories.

Customer: Honey B's
Address: 6841 Virginia Parkway Suite 103, #218
McKinney, TX 75071
Sample ID: Tincture
Matrix: Tincture
Labnumber: 23J0064-02

Density (g/mL): 0.9618



Cannabinoid Profile

Test Conditions: 21°C

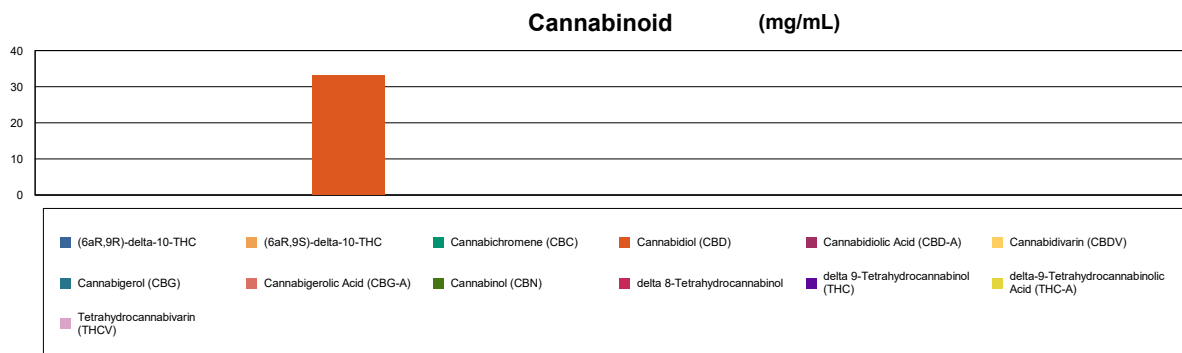
Extraction Technician: SH

Analytical Chemist: SH

Extraction Date(s)	Analysis Date(s)
10/9/2023	10/10/2023

Test Method: Cannabinoid Potency by HPLC		Results	
	LOD (mg/mL)	%	mg/mL
Cannabidivarin (CBDV)	<0.20		
Cannabidiolic Acid (CBD-A)	<0.20		
Cannabigerolic Acid (CBG-A)	<0.20		
Cannabigerol (CBG)	<0.20		
Cannabidiol (CBD)		3.31	33.1
Tetrahydrocannabivarin (THCV)	<0.20		
Cannabinol (CBN)	<0.20		
Cannabichromene (CBC)	<0.20		
delta 9-Tetrahydrocannabinol (THC)	<0.30		
delta-9-Tetrahydrocannabinolic Acid (THC-A)	<0.30		
delta 8-Tetrahydrocannabinol	<0.30		
(6aR,9S)-delta-10-THC	<0.30		
(6aR,9R)-delta-10-THC	<0.30		
Cannabinoids Total		%	mg/mL
Max Active THC (delta-9-tetrahydrocannabinol)		<0.03	<0.30
Max Active CBD		3.31	33.10
Total Cannabinoids		3.31	33.10

Following USDA guidelines on uncertainty, Altitude Consulting's uncertainty is calculated to be +/- 5% for all cannabinoids using a coverage factor of 2 (95% confidence interval). Measurement uncertainty has not been factored into reported values. Blank results indicate the compound was below the limit of detection.



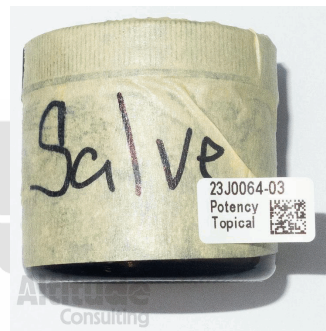
Gary Brook - Laboratory Director - 10/11/2023

Reporting Limits will vary based on sample extraction weight used for the analysis.

The results of this report are based solely on the sample submitted and cannot be reproduced. Decision Rule: Measurement uncertainty is not accounted for in the reported values.

Results are based solely on calculated numbers. Altitude Consulting makes no Statements of conformity. **Pesticide, metal, and microbial analyses are subcontracted to ISO**

17025 laboratories.



Customer: Honey B's
Address: 6841 Virginia Parkway Suite 103, #218
McKinney, TX 75071
Sample ID: Salve
Matrix: Topical
Labnumber: 23J0064-03

Cannabinoid Profile

Test Conditions: 21°C

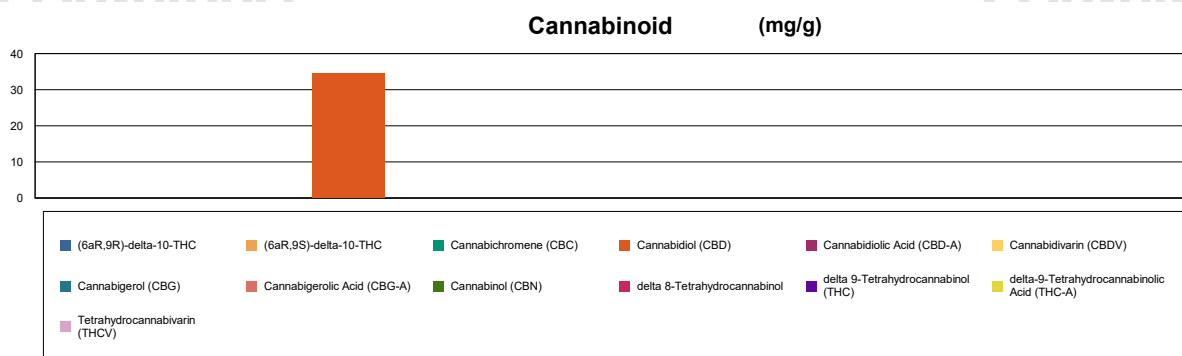
Extraction Technician: SH

Analytical Chemist: SH

Extraction Date(s)	Analysis Date(s)
10/9/2023	10/10/2023

Test Method: Cannabinoid Potency by HPLC		Results	
	LOD (mg/g)	%	mg/g
Cannabidivarin (CBDV)	<0.070		
Cannabidiolic Acid (CBD-A)	<0.070		
Cannabigerolic Acid (CBG-A)	<0.070		
Cannabigerol (CBG)	<0.070		
Cannabidiol (CBD)		3.45	34.5
Tetrahydrocannabivarin (THCV)	<0.070		
Cannabinol (CBN)	<0.070		
Cannabichromene (CBC)	<0.070		
delta 9-Tetrahydrocannabinol (THC)	<0.10		
delta-9-Tetrahydrocannabinolic Acid (THC-A)	<0.10		
delta 8-Tetrahydrocannabinol	<0.10		
(6aR,9S)-delta-10-THC	<0.10		
(6aR,9R)-delta-10-THC	<0.10		
Cannabinoids Total		%	mg/g
Max Active THC (delta-9-tetrahydrocannabinol)		<0.01	<0.10
Max Active CBD		3.45	34.50
Total Cannabinoids		3.45	34.50

Following USDA guidelines on uncertainty, Altitude Consulting's uncertainty is calculated to be +/- 5% for all cannabinoids using a coverage factor of 2 (95% confidence interval). Measurement uncertainty has not been factored into reported values. Blank results indicate the compound was below the limit of detection.



Gary Brook - Laboratory Director - 10/11/2023

Reporting Limits will vary based on sample extraction weight used for the analysis.

The results of this report are based solely on the sample submitted and cannot be reproduced. Decision Rule: Measurement uncertainty is not accounted for in the reported values.

Results are based solely on calculated numbers. Altitude Consulting makes no Statements of conformity. **Pesticide, metal, and microbial analyses are subcontracted to ISO**

17025 laboratories.



Customer: Honey B's
Address: 6841 Virginia Parkway Suite 103, #218
McKinney, TX 75071
Sample ID: Lip Balm
Matrix: Topical
Labnumber: 23J0064-04

Cannabinoid Profile

Test Conditions: 21°C

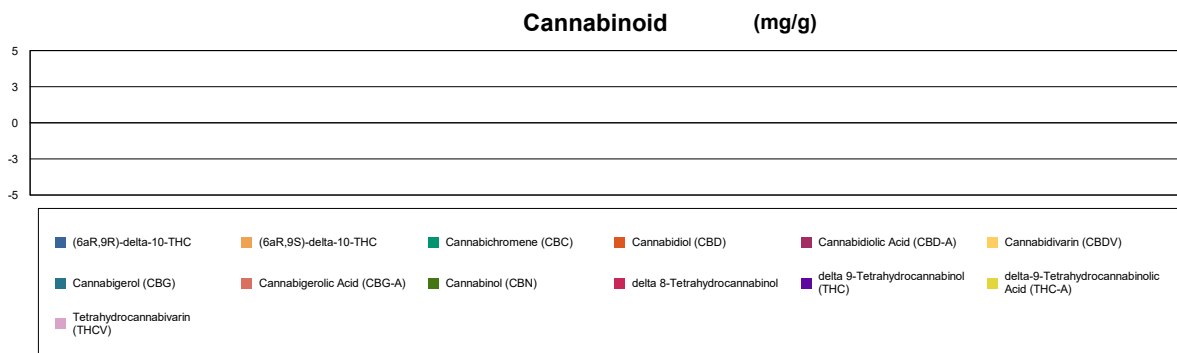
Extraction Technician: SH

Analytical Chemist: SH

Extraction Date(s)	Analysis Date(s)
10/9/2023	10/10/2023

Test Method: Cannabinoid Potency by HPLC		Results	
	LOD (mg/g)	%	mg/g
Cannabidiol (CBD)	<0.060		
Cannabidiol Acid (CBD-A)	<0.060		
Cannabigerol (CBG)	<0.060		
Cannabigerol Acid (CBG-A)	<0.060		
Tetrahydrocannabinol (THC)	<0.060		
Tetrahydrocannabinol Acid (THC-A)	<0.060		
Cannabinol (CBN)	<0.060		
Cannabichromene (CBC)	<0.060		
delta 9-Tetrahydrocannabinol (THC)	<0.10		
delta-9-Tetrahydrocannabinol Acid (THC-A)	<0.10		
delta 8-Tetrahydrocannabinol	<0.10		
(6aR,9S)-delta-10-THC	<0.10		
(6aR,9R)-delta-10-THC	<0.10		
Cannabinoids Total		%	mg/g
Max Active THC (delta-9-tetrahydrocannabinol)		<0.01	<0.10
Max Active CBD		<0.006	<0.060
Total Cannabinoids		<0.01	<0.10

Following USDA guidelines on uncertainty, Altitude Consulting's uncertainty is calculated to be +/- 5% for all cannabinoids using a coverage factor of 2 (95% confidence interval). Measurement uncertainty has not been factored into reported values. Blank results indicate the compound was below the limit of detection.



Gary Brook - Laboratory Director - 10/11/2023

Reporting Limits will vary based on sample extraction weight used for the analysis.

The results of this report are based solely on the sample submitted and cannot be reproduced. Decision Rule: Measurement uncertainty is not accounted for in the reported values.

Results are based solely on calculated numbers. Altitude Consulting makes no Statements of conformity. **Pesticide, metal, and microbial analyses are subcontracted to ISO**

17025 laboratories.



Customer: Honey B's
Address: 6841 Virginia Parkway Suite 103, #218
McKinney, TX 75071
Sample ID: Tea
Matrix: Edible
Labnumber: 23J0064-05

Total mass or volume per unit (g or mL): 2.3583

Cannabinoid Profile

Test Conditions: 21°C

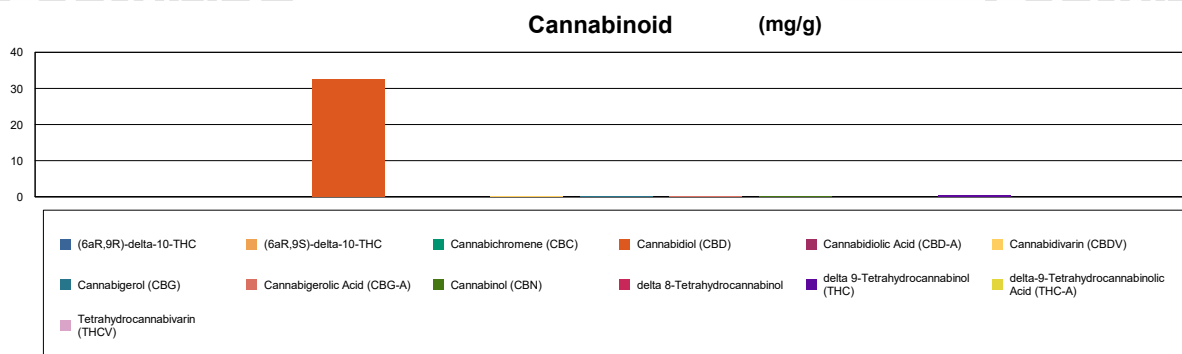
Extraction Technician: SH

Analytical Chemist: SH

Extraction Date(s)	Analysis Date(s)
10/9/2023	10/10/2023

Test Method: Cannabinoid Potency by HPLC			Results	
	LOD (mg/g)	%	mg/g	mg/Bag
Cannabidivarin (CBDV)		0.01	0.099	0.234
Cannabidiolic Acid (CBD-A)	<0.020			
Cannabigerolic Acid (CBG-A)		0.006	0.062	0.146
Cannabigerol (CBG)		0.009	0.094	0.221
Cannabidiol (CBD)		3.26	32.6	76.9
Tetrahydrocannabivarin (THCV)	<0.020			
Cannabinol (CBN)		0.005	0.048	0.114
Cannabichromene (CBC)	<0.020			
delta 9-Tetrahydrocannabinol (THC)		0.03	0.343	0.808
delta-9-Tetrahydrocannabinolic Acid (THC-A)	<0.040			
delta 8-Tetrahydrocannabinol	<0.040			
(6aR,9S)-delta-10-THC	<0.040			
(6aR,9R)-delta-10-THC	<0.040			
Cannabinoids Total		%	mg/g	
Max Active THC (delta-9-tetrahydrocannabinol)		0.03	0.34	
Max Active CBD		3.26	32.60	
Total Cannabinoids		3.33	33.30	

Following USDA guidelines on uncertainty, Altitude Consulting's uncertainty is calculated to be +/- 5% for all cannabinoids using a coverage factor of 2 (95% confidence interval). Measurement uncertainty has not been factored into reported values. Blank results indicate the compound was below the limit of detection.



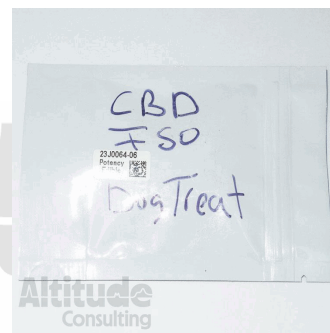
Gary Brook - Laboratory Director - 10/11/2023

Reporting Limits will vary based on sample extraction weight used for the analysis.

The results of this report are based solely on the sample submitted and cannot be reproduced. Decision Rule: Measurement uncertainty is not accounted for in the reported values.

Results are based solely on calculated numbers. Altitude Consulting makes no Statements of conformity. **Pesticide, metal, and microbial analyses are subcontracted to ISO**

17025 laboratories.



Customer: Honey B's
Address: 6841 Virginia Parkway Suite 103, #218
McKinney, TX 75071
Sample ID: Dog Treat
Matrix: Edible
Labnumber: 23J0064-06

Total mass or volume per unit (g or mL): 8.0551

Cannabinoid Profile

Test Conditions: 21°C

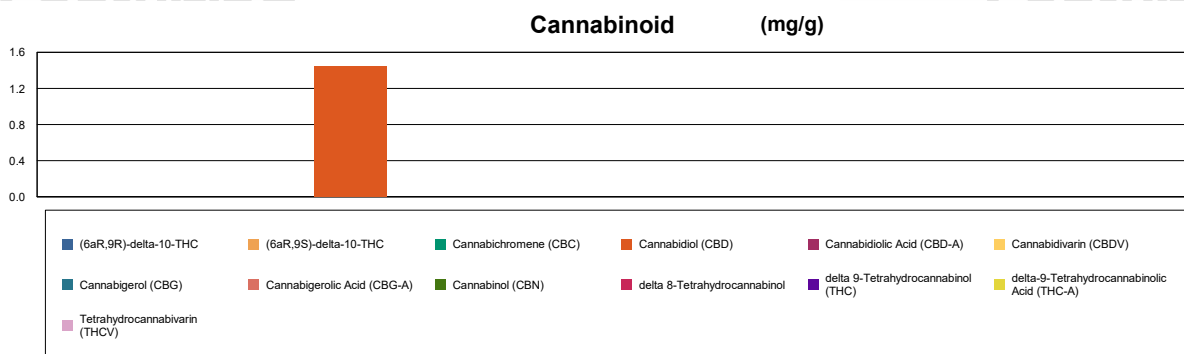
Extraction Technician: SH

Analytical Chemist: SH

Extraction Date(s)	Analysis Date(s)
10/9/2023	10/10/2023

Test Method: Cannabinoid Potency by HPLC		Results		
	LOD (mg/g)	%	mg/g	mg/Treat
Cannabidivarin (CBDV)	<0.020			
Cannabidiolic Acid (CBD-A)	<0.020			
Cannabigerolic Acid (CBG-A)	<0.020			
Cannabigerol (CBG)	<0.020			
Cannabidiol (CBD)		0.14	1.45	11.7
Tetrahydrocannabivarin (THCV)	<0.020			
Cannabinol (CBN)	<0.020			
Cannabichromene (CBC)	<0.020			
delta 9-Tetrahydrocannabinol (THC)	<0.030			
delta-9-Tetrahydrocannabinolic Acid (THC-A)	<0.030			
delta 8-Tetrahydrocannabinol	<0.030			
(6aR,9S)-delta-10-THC	<0.030			
(6aR,9R)-delta-10-THC	<0.030			
Cannabinoids Total		%	mg/g	
Max Active THC (delta-9-tetrahydrocannabinol)		<0.003	<0.030	
Max Active CBD		0.15	1.45	
Total Cannabinoids		0.15	1.45	

Following USDA guidelines on uncertainty, Altitude Consulting's uncertainty is calculated to be +/- 5% for all cannabinoids using a coverage factor of 2 (95% confidence interval). Measurement uncertainty has not been factored into reported values. Blank results indicate the compound was below the limit of detection.



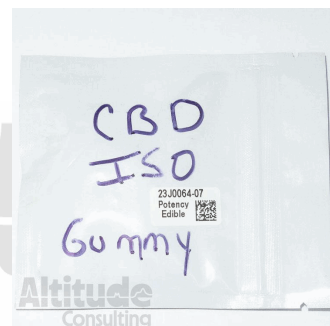
Gary Brook - Laboratory Director - 10/11/2023

Reporting Limits will vary based on sample extraction weight used for the analysis.

The results of this report are based solely on the sample submitted and cannot be reproduced. Decision Rule: Measurement uncertainty is not accounted for in the reported values.

Results are based solely on calculated numbers. Altitude Consulting makes no Statements of conformity. **Pesticide, metal, and microbial analyses are subcontracted to ISO**

17025 laboratories.



Customer: Honey B's
Address: 6841 Virginia Parkway Suite 103, #218
McKinney, TX 75071
Sample ID: Gummies
Matrix: Edible
Labnumber: 23J0064-07

Total mass or volume per unit (g or mL): 9.4150

Cannabinoid Profile

Test Conditions: 21°C

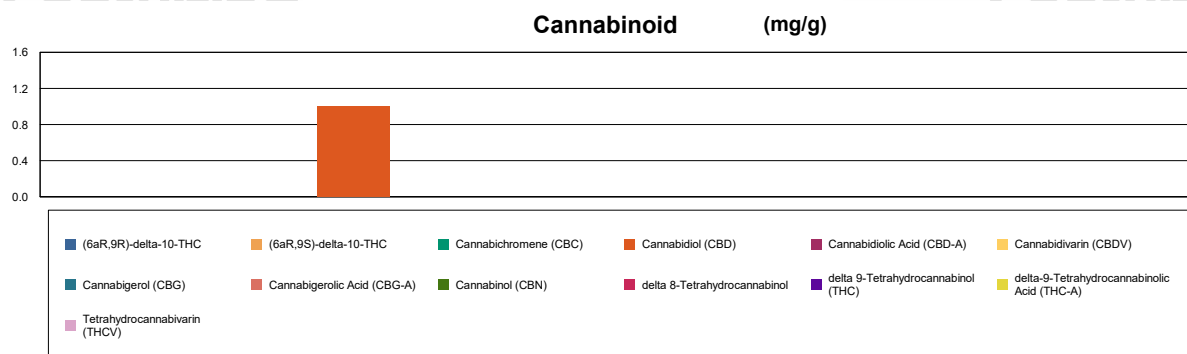
Extraction Technician: SH

Analytical Chemist: SH

Extraction Date(s)	Analysis Date(s)
10/9/2023	10/10/2023

Test Method: Cannabinoid Potency by HPLC		Results		
	LOD (mg/g)	%	mg/g	mg/Gummy
Cannabidivarin (CBDV)	<0.030			
Cannabidiolic Acid (CBD-A)	<0.030			
Cannabigerolic Acid (CBG-A)	<0.030			
Cannabigerol (CBG)	<0.030			
Cannabidiol (CBD)		0.10	1.01	9.48
Tetrahydrocannabivarin (THCV)	<0.030			
Cannabinol (CBN)	<0.030			
Cannabichromene (CBC)	<0.030			
delta 9-Tetrahydrocannabinol (THC)	<0.060			
delta-9-Tetrahydrocannabinolic Acid (THC-A)	<0.060			
delta 8-Tetrahydrocannabinol	<0.060			
(6aR,9S)-delta-10-THC	<0.060			
(6aR,9R)-delta-10-THC	<0.060			
Cannabinoids Total		%	mg/g	
Max Active THC (delta-9-tetrahydrocannabinol)		<0.006	<0.060	
Max Active CBD		0.10	1.01	
Total Cannabinoids		0.10	1.01	

Following USDA guidelines on uncertainty, Altitude Consulting's uncertainty is calculated to be +/- 5% for all cannabinoids using a coverage factor of 2 (95% confidence interval). Measurement uncertainty has not been factored into reported values. Blank results indicate the compound was below the limit of detection.



END OF REPORT

END OF REPORT

Gary Brook - Laboratory Director - 10/11/2023

Reporting Limits will vary based on sample extraction weight used for the analysis.

The results of this report are based solely on the sample submitted and cannot be reproduced. Decision Rule: Measurement uncertainty is not accounted for in the reported values.

Results are based solely on calculated numbers. Altitude Consulting makes no Statements of conformity. Pesticide, metal, and microbial analyses are subcontracted to ISO

17025 laboratories.